

Emerson™

SureSwitch™ relay

Universal Electronic Upgrade
for Mechanical Compressor Contactors

49P11-843



Contactor + Short-Cycle Timer + Brownout Protection = Long-Life Sealed Switch

SureSwitch Benefits

- 5x contactor life
- Sealed to keep out ants and debris
- Microprocessor control nearly eliminates contact welding and pitting
- Ideal install with new PM contract
- Compressor protected from brownouts and short cycling
- Save on pest control treatments



5-Year Warranty



Sealed Relay Construction
The SureSwitch internal compressor relay is completely sealed from insects and debris.

| General Ratings | | | |
|-----------------|-----------|-------|----------|
| Amps: | 40 (FLA) | Coil: | 24 VAC |
| Amps: | 200 (LRA) | Pole: | 1 or 1.5 |



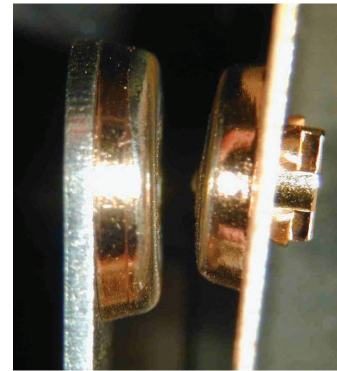
Universal Electronic Upgrade for Mechanical Compressor Contactors

Features

- Microprocessor controlled sealed compressor switching
- Line voltage brownout protection
- Short cycle protection
- Tricolor LED displays
- Heavy-duty lug connectors
- Zero chatter latching relay
- Four-hole mounting matches mechanical contactors
- Random start delay on power up and brownout recovery
- Compressor test and cycle count by pushbutton

Performance Tested

The SureSwitch sealed relay has undergone exhaustive testing on Copeland 5-ton scroll compressors to demonstrate ultimate reliability. This technology has been utilized on OEM controls since 2006 and is now available for the Aftermarket.

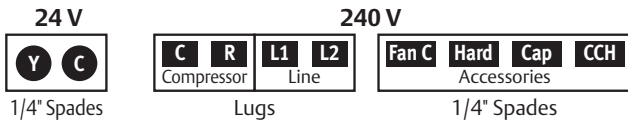


Contacts after one million cycle testing.

5x Contactor Life

Microprocessor controlled switching algorithms reduce arcing, virtually eliminating contact pitting and welding.

Terminal Designations



LED Flash Codes

| | |
|----------------------|----------------|
| Slow Green | Standby |
| Solid Green | Normal |
| Fast Green | Delay |
| Green / Red | Low Line Volt. |
| Green / Yellow / Red | Test |

Specifications

Electrical Ratings

Line Voltage Input 240 VAC, 50/60 Hz
 Full Load Amperes (FLA) 40A
 Locked Rotor Amperes (LRA) 200A
 Control (Coil) Voltage (Y, C) 24 VAC, 50/60 Hz

Recommended Terminal Torque – C, R, L1 and L2

#4 – 6 AWG 45 in-lbs
 #8 AWG 40 in-lbs
 #10 – 14 AWG 35 in-lbs
 24 VAC (Y, C) Terminals are 1/4" Male QC's accepting #12-24 AWG wire

Timings

Anti-Short-Cycle Delay 0s or 180s (selectable) at 60 Hz
 0s or 216s (selectable) at 50 Hz
 Compressor Test 5s at 60 Hz
 6s at 50 Hz

Dimensions

2-3/4" W x 2-3/8" H x 3-7/8" L

Operating Temperature Range

-40° to 158° F (-40° to 70° C)

Humidity Range

5 to 95% relative Humidity (non-condensing)

For Additional Information

Scan QR Code or visit us at www.white-rogers.com

Agency Approval Pending



For Ultimate Copeland Scroll™ Protection, install CoreSense™ Protection